

PROJECT BY



Site Address:

BALAJI NAGAR, BEHIND NARAYAN NAGAR, KATHORA ROAD, AMRAVATI - 444604

Office Address:

VIJAY ESTATE LLP

Block 12, Prabhukrupa Height, Harshraj Square,
Paratwada - Amravati Rd, near Aaji Aajoba Natu Garden,
Amravati, Maharashtra 444604

Email ID

vijayestatellp@gmail.com

Website

www.vpell.in

Contact Us

9579320904 | 9158846484

Site Location



VIJAY PRIVILEGE
LUXURY MADE LIVABLE.

2 & 3 BHK LUXURIOUS HOME

ARCHITECT

Pranjape Architect & Associates

FINANCIAL ADVISOR

Aditya Sawala & Associates

STRUCTURAL CONSULTANT

Safe Consultant

DESIGN

Codearly Studio

Disclaimer : *All furniture/objects shown in the plan are for presentation & understanding purpose only. By no means, it will form a part of final deliverable products. #. All the elements, objects, treatments, materials, equipments & color scheme shown are artisan's impression and purely for presentation purpose. By no means, it will form a part of the amenities, features or specifications of our final products.

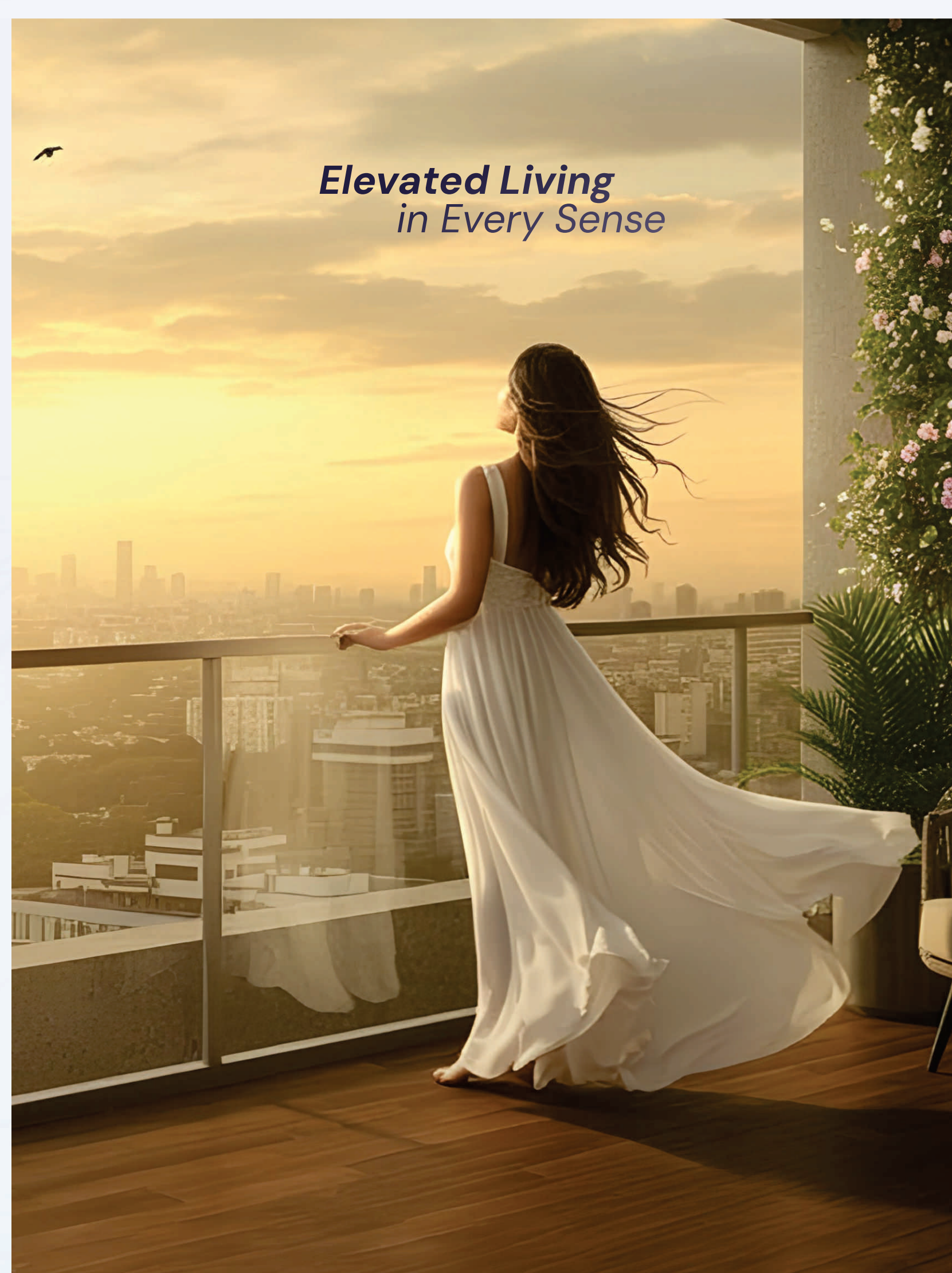
MAHARERA:

*Gracefully structured.
Genuinely lived.*

A Name That Builds with Intent

Over the past 8 years, Vijay Estate has quietly built a name grounded in trust, thoughtful design and dependable delivery. What began with a vision to offer better homes has grown into a commitment that families across Amravati now count on.

Vijay Privilege continues this journey, bringing together refined planning, genuine quality and a location that balances everyday ease with long-term value.



*Elevated Living
in Every Sense*



Architecture with Clarity and Confidence

A residence defined by
scale, symmetry, and stillness.

Bright,
Breezy
Spaces

Refined
Building
Finish

Smart
Everyday
Features

Lush
Green
Surroundings

Prime
Easy
Location

**Designed to
Fit In, Made to
Stand Out**

A residence defined by scale, symmetry, and stillness, where generous proportions offer space to breathe, clean lines bring visual clarity, and the calm atmosphere gives every moment a sense of pause and presence.



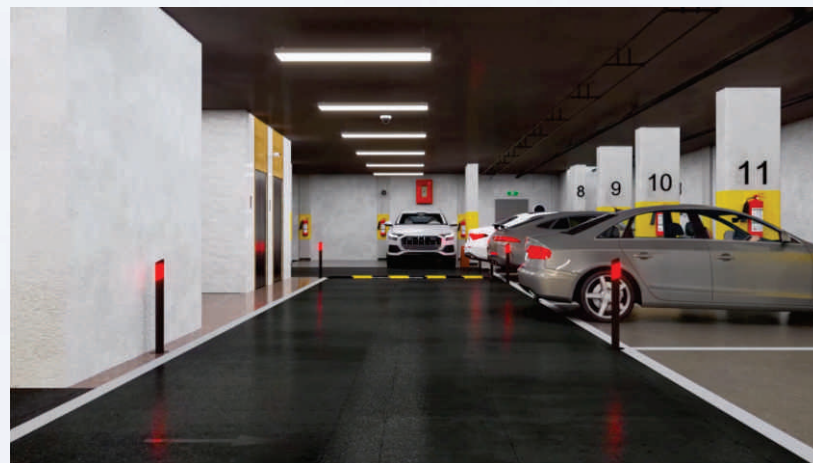
Vijay Privilege is built to make everyday living smoother, with

Practical Features in every corner



Parking & Transportation

- Ground floor Parking
- Basement / Stilt Parking
- Visitor Parking
- Dedicated Car Parking for all flat owners.
- EV Charging Point



Security & Safety

- 24x7 security guards
- CCTV surveillance in common areas
- Video door phone
- Fire-fighting system
- Boom barriers at gate

Building Infrastructure

- 2 unit High-speed lifts
- Power backup for lifts
- Rainwater harvesting system
- solar power for common lights
- Underground water tanks & overhead tanks
- Earthquake-resistant structure

Essentials in Place, Lifestyle on Point.



Recreational / Lifestyle Amenities

- Carrom zone
- Chess corner
- Fitness Center
- Yoga & meditation room
- Library or Reading Lounge



Daily life feels more balanced when your home supports it at every step, from how you move through your space to the way light enters your rooms, from the calm of evenings to the ease of everyday routines, everything here is built to make living simpler and smoother.



RECREATIONAL SPACE

Rooftop spaces that breathe with you.



Terrace Garden



Rooftop sit-out area



Meditation Space



Yoga zone



Children's play zone



Gazebos/ Pergolas



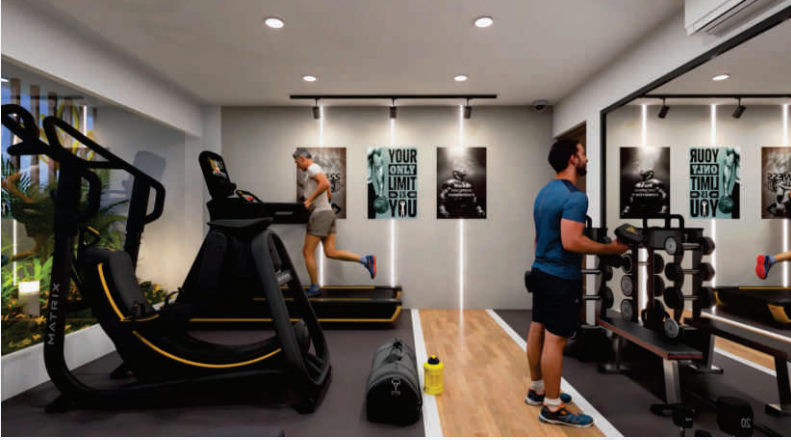
Relaxation Zones



Planters

A Lifestyle Built Into The Address

Spaces across the project created for relaxation, activity and time that feels well spent every day.



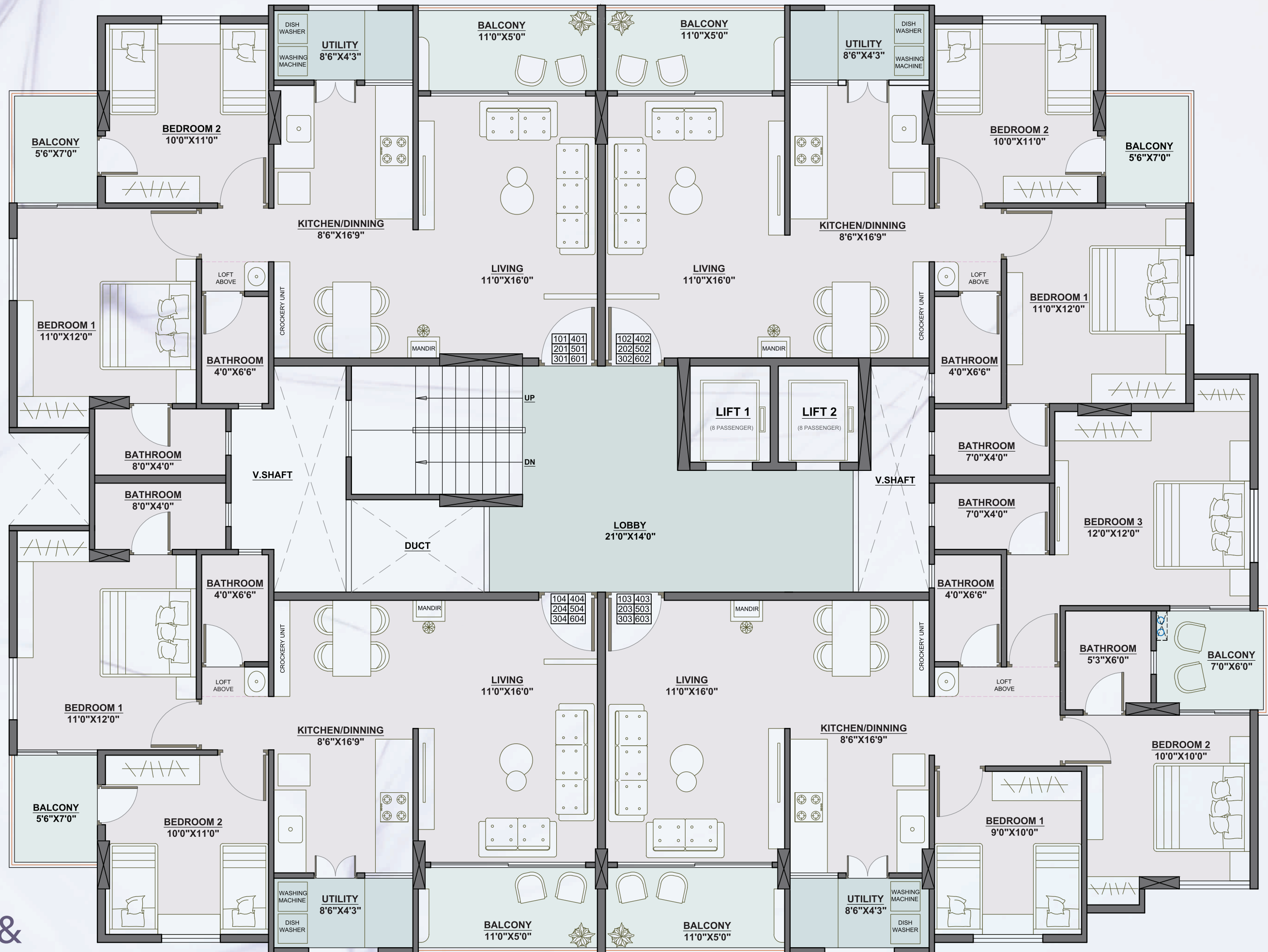
Spaces That Add More To Everyday Living

Places within the project designed for movement, relaxation and time well spent beyond the walls of home.



Typical Floor Plan

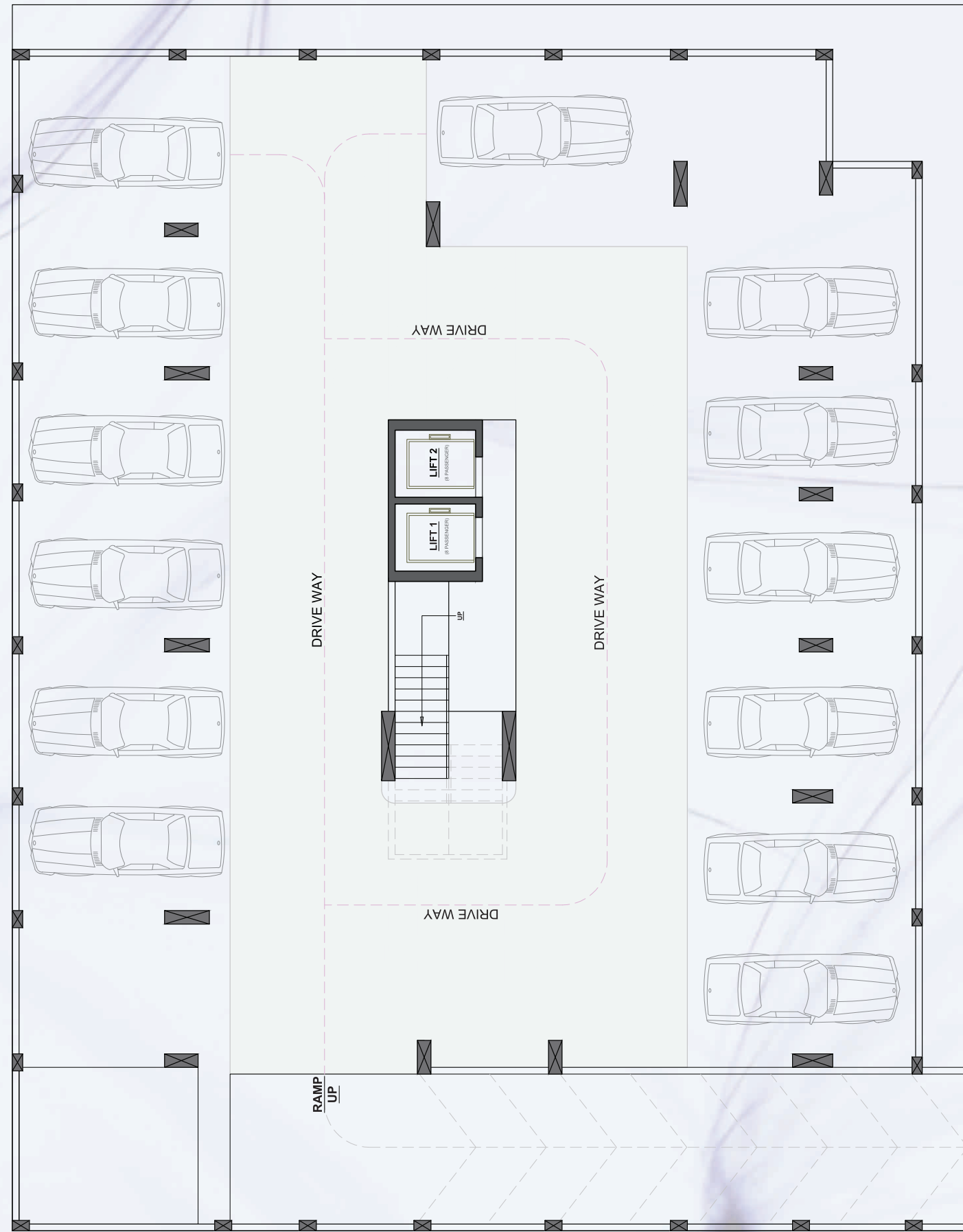
1st to 6th Floor



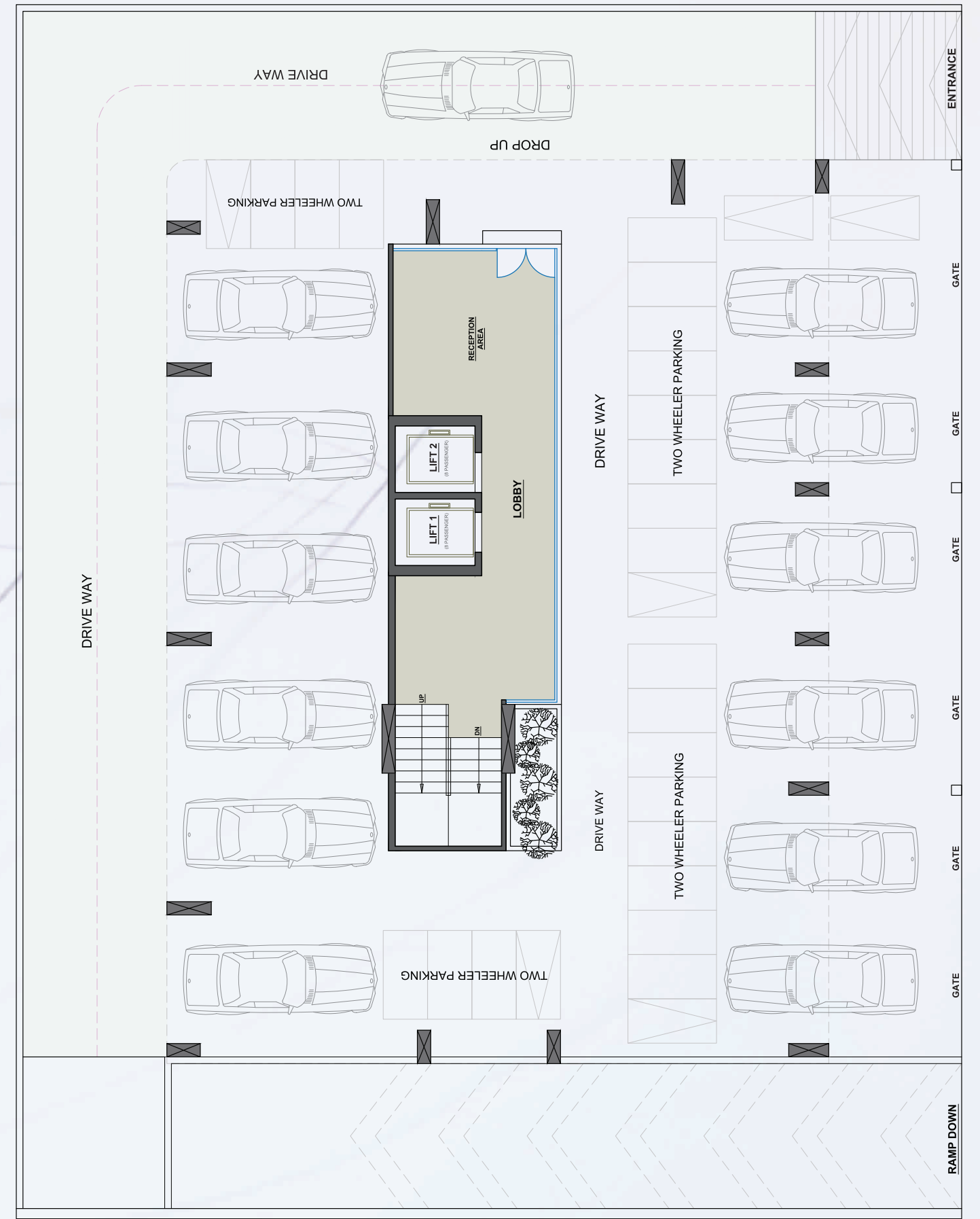
2 BHK &
3 BHK



Basement Floor Plan



Ground Floor Plan



Specification

Kitchen

- Modular kitchen setup
- Overhead storage
- Granite or quartz countertop
- Stainless steel sink
- AMC water Supply
- RO water purifier point
- Vitrified tiles (2 x 4)

Bathrooms

- Jaquar Branded sanitary ware
- Geyser points
- Diverter mixer
- Anti-skid flooring
- Wall-mounted western toilet
- Table top Basin
- Anti-skid tiles in bathrooms (2 x 4)
- Thermostatic Diverter in Masterbedroom

Bedrooms

- Large windows for ventilation
- Premium fixtures for door
- Vitrified tiles bedrooms (2 x 4)
- Wide balcony/sit-out area

Living & Dining Area

- Internet/optical fiber points
- Premium light fixtures provisions
- False ceiling in entire flat
- Vitrified tiles in living (2 x 4)

Electrical & Technology

- Modular electrical switches
- Adequate power points in all rooms
- Wiring work in (Polycab or RR Cables)
- Robot Floor cleaner electric point

Doors & Windows

- Designer main door
- Aluminum / UPVC sliding windows
- Mosquito mesh provision

Utility & Storage

- Dish Washer Point
- Washing machine point
- Tap for washing
- Anti-skid tiles in utility & balconies (2 x 4)

A Spot That's Always in Reach.

